



CANYON COUNTY COMMISSIONERS

Leslie Van Beek
District I

Keri K. Smith
District II

Pam White
District III

1115 Albany ❖ Caldwell, Idaho 83605 ❖ Telephone: (208) 454-7507 ❖ Fax: (208) 454-7336

October 5, 2021

The Concrete Cure, Boise
5449 W. Kendall Street
Boise, Idaho 83706

Consurco
621 E. King Street, #150
Meridian, Idaho 83642

Wall 2 Wall Flooring
10718 W. Executive Drive
Boise, Idaho 83713

Re: Fall 2021 Solicitation for Bids – Polished Concrete Floors at Fair Expo Building

Dear Licensed Public Works Contractor:

Canyon County and its Department of Facilities and Maintenance, pursuant to procedures provided by Idaho Code § 67-2805(1), hereby solicit bids for the Fall 2021 Polished Concrete Floors at Fair Expo Building Project.

The purpose of this Project is to install polished concrete flooring in a portion of the Canyon County Fair Expo building, as described by the Scope of Work, affixed hereto as Attachment 1 with supplemental attachments 2-4.

In addition to a demonstrated ability to professionally provide the specified work, the selected contractor must offer the lowest responsive bid and:

- Be licensed to do business in Idaho and furnish satisfactory evidence that he has paid or secured all taxes for which he or his property is liable then due or delinquent;
- Obtain and maintain all necessary licenses (including that of a Class C or higher public works contractor), permits, and other authorizations necessary to perform the required work;
- Provide performance bond and payment bond, each in the full contract amount;
- Maintain worker's compensation and employer's liability insurance in an amount equal to, or in excess of, statutory limits;
- Maintain comprehensive and liability insurance in the amount of \$1,000,000.00 on all vehicles operated in furtherance of the project and name Canyon County as an additional insured on the insurance policy;

- Maintain commercial general liability insurance in the amount of \$1,000,000.00 per occurrence and \$2,000,000.00 in the aggregate and name Canyon County as an additional insured on the insurance policy;
- Be prepared to agree to and comply with Canyon County's proposed Contract for Fall 2021 Polished Concrete Floors at Fair Expo Building Project affixed hereto as Attachment 2 and incorporated by reference;
- Provide a written history to Canyon County detailing any judgment, claim or suit pending or outstanding against your firm;
- Provide for any sub-contraction necessary, and provide the County copies of such sub's licensure (including that of a public works contractor);

Objections to the specifications or bid procedures must be received in writing or email by October 8, 2021 at 5:00 p.m.

Bids and any objections must be directed to the Canyon County Board of Commissioners via direct delivery or email at bocc@canyonco.org.


Bids must be identified with the subject line "Fall 2021 Polished Concrete Floors at Expo Building Project," and be received by Thursday, October 14, 2021 at 8:30 a.m. Bids will be opened on October 14, 2021, at 9:00 a.m.

Questions about the project or bid process must be directed to Paul Navarro, Project Director, at (208) 454-7493 or pnavarro@canyonco.org.

Although the County intends to accept the responsive bid proposing the lowest price, it reserves the right to reject any or all bids or to otherwise act in the best interest of the County.

Sincerely,

BOARD OF COUNTY COMMISSIONERS
CANYON COUNTY, IDAHO



Leslie Van Beek, Commissioner



Kerl K. Smith, Commissioner



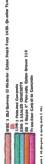
Pam White, Commissioner

Attachments

**SCOPE OF WORK
FALL 2021 FAIR EXPO BUILDING
POLISHED CONCRETE PROJECT**

To install polished concrete flooring in a portion of the Canyon County Fair Expo building to be located at Caldwell, Idaho. Polished concrete work to include:

- Clean out and caulk the control joints with Polyura – Euclid QuikJoint UVR – color Eerie Grey;
- Grind the floor with metal diamonds 80 grit the number of passes required to achieve the Class B (Salt and Pepper) exposure finish (possibly require 4 perpendicular passes)
- Polish the floor with Resin bonded diamonds starting with 100 grit 4 perpendicular passes.
- Run two perpendicular passes of resin 200 grit.
- Run two perpendicular passes of resin 400 grit.
- Run two perpendicular passes of resin 800 grit.
- Clean and densify/seal the floor using Prosoco Consolideck LS 8.
- Burnish the floor with a high speed burnisher and diamond impregnated pads.
- Clean the floor and apply the final Guard to the floor - Prosoco SLX 100.



GENERAL NOTES

- A. REFER TO ARCHITECTURAL FLOOR AND PLAN FLOOR PLANS.
- B. FLOOR FINISHES SHALL BE PROVIDED TO MATCH THE CENTER OF THE FLOOR FINISHES ON THE ADJACENT ROOM.
- C. ALL ROOMS WITH FINISHED CEILING. PAINT WALLS TO COLOR INDICATED ON ARCHITECTURAL DRAWINGS.
- D. SEE FLOOR LAYOUT PLANS FOR OTHER FINISHES AND FINISHES FROM SCHEDULE FOR FINISHES TO BE USED.
- E. ALL WALLS TO BE PAINTED TO COLOR INDICATED ON ARCHITECTURAL DRAWINGS.
- F. CONCRETE SHALL BE PLACED AND FINISHED TO MEET ALL RELEVANT CODES AND REGULATIONS.
- G. ALL REVISIONS TO THIS DRAWING SHALL BE APPROVED BY THE ARCHITECT.
- H. ALL FLOOR FINISHES SHALL BE INSTALLED TO THE FINISH SURFACE OF THE FLOOR.
- I. FLOOR FINISHES SHALL BE INSTALLED TO THE FINISH SURFACE OF THE FLOOR.
- J. FLOOR FINISHES SHALL BE INSTALLED TO THE FINISH SURFACE OF THE FLOOR.
- K. FLOOR FINISHES SHALL BE INSTALLED TO THE FINISH SURFACE OF THE FLOOR.
- L. FLOOR FINISHES SHALL BE INSTALLED TO THE FINISH SURFACE OF THE FLOOR.
- M. FLOOR FINISHES SHALL BE INSTALLED TO THE FINISH SURFACE OF THE FLOOR.
- N. FLOOR FINISHES SHALL BE INSTALLED TO THE FINISH SURFACE OF THE FLOOR.
- O. FLOOR FINISHES SHALL BE INSTALLED TO THE FINISH SURFACE OF THE FLOOR.
- P. FLOOR FINISHES SHALL BE INSTALLED TO THE FINISH SURFACE OF THE FLOOR.
- Q. FLOOR FINISHES SHALL BE INSTALLED TO THE FINISH SURFACE OF THE FLOOR.
- R. FLOOR FINISHES SHALL BE INSTALLED TO THE FINISH SURFACE OF THE FLOOR.
- S. FLOOR FINISHES SHALL BE INSTALLED TO THE FINISH SURFACE OF THE FLOOR.
- T. FLOOR FINISHES SHALL BE INSTALLED TO THE FINISH SURFACE OF THE FLOOR.
- U. FLOOR FINISHES SHALL BE INSTALLED TO THE FINISH SURFACE OF THE FLOOR.
- V. FLOOR FINISHES SHALL BE INSTALLED TO THE FINISH SURFACE OF THE FLOOR.
- W. FLOOR FINISHES SHALL BE INSTALLED TO THE FINISH SURFACE OF THE FLOOR.
- X. FLOOR FINISHES SHALL BE INSTALLED TO THE FINISH SURFACE OF THE FLOOR.
- Y. FLOOR FINISHES SHALL BE INSTALLED TO THE FINISH SURFACE OF THE FLOOR.
- Z. FLOOR FINISHES SHALL BE INSTALLED TO THE FINISH SURFACE OF THE FLOOR.

KEY NOTES

1. METAL TR. AT THE TOP OF ALL TYP. UNLESS NOTED OTHERWISE.
2. METAL TR. AT THE TOP OF ALL EXTERIOR CONCRETE UNLESS OTHERWISE NOTED.
3. METAL TR. AT THE TOP OF ALL EXTERIOR CONCRETE UNLESS OTHERWISE NOTED.
4. METAL TR. AT THE TOP OF ALL EXTERIOR CONCRETE UNLESS OTHERWISE NOTED.
5. METAL TR. AT THE TOP OF ALL EXTERIOR CONCRETE UNLESS OTHERWISE NOTED.
6. METAL TR. AT THE TOP OF ALL EXTERIOR CONCRETE UNLESS OTHERWISE NOTED.
7. METAL TR. AT THE TOP OF ALL EXTERIOR CONCRETE UNLESS OTHERWISE NOTED.
8. METAL TR. AT THE TOP OF ALL EXTERIOR CONCRETE UNLESS OTHERWISE NOTED.
9. METAL TR. AT THE TOP OF ALL EXTERIOR CONCRETE UNLESS OTHERWISE NOTED.
10. METAL TR. AT THE TOP OF ALL EXTERIOR CONCRETE UNLESS OTHERWISE NOTED.
11. METAL TR. AT THE TOP OF ALL EXTERIOR CONCRETE UNLESS OTHERWISE NOTED.
12. METAL TR. AT THE TOP OF ALL EXTERIOR CONCRETE UNLESS OTHERWISE NOTED.
13. METAL TR. AT THE TOP OF ALL EXTERIOR CONCRETE UNLESS OTHERWISE NOTED.
14. METAL TR. AT THE TOP OF ALL EXTERIOR CONCRETE UNLESS OTHERWISE NOTED.
15. METAL TR. AT THE TOP OF ALL EXTERIOR CONCRETE UNLESS OTHERWISE NOTED.
16. METAL TR. AT THE TOP OF ALL EXTERIOR CONCRETE UNLESS OTHERWISE NOTED.
17. METAL TR. AT THE TOP OF ALL EXTERIOR CONCRETE UNLESS OTHERWISE NOTED.
18. METAL TR. AT THE TOP OF ALL EXTERIOR CONCRETE UNLESS OTHERWISE NOTED.
19. METAL TR. AT THE TOP OF ALL EXTERIOR CONCRETE UNLESS OTHERWISE NOTED.
20. METAL TR. AT THE TOP OF ALL EXTERIOR CONCRETE UNLESS OTHERWISE NOTED.

FLOORING MATERIALS

- 1. FLOORING MATERIALS
- 2. FLOORING MATERIALS
- 3. FLOORING MATERIALS
- 4. FLOORING MATERIALS
- 5. FLOORING MATERIALS
- 6. FLOORING MATERIALS
- 7. FLOORING MATERIALS
- 8. FLOORING MATERIALS
- 9. FLOORING MATERIALS
- 10. FLOORING MATERIALS
- 11. FLOORING MATERIALS
- 12. FLOORING MATERIALS
- 13. FLOORING MATERIALS
- 14. FLOORING MATERIALS
- 15. FLOORING MATERIALS
- 16. FLOORING MATERIALS
- 17. FLOORING MATERIALS
- 18. FLOORING MATERIALS
- 19. FLOORING MATERIALS
- 20. FLOORING MATERIALS

KEY NOTES

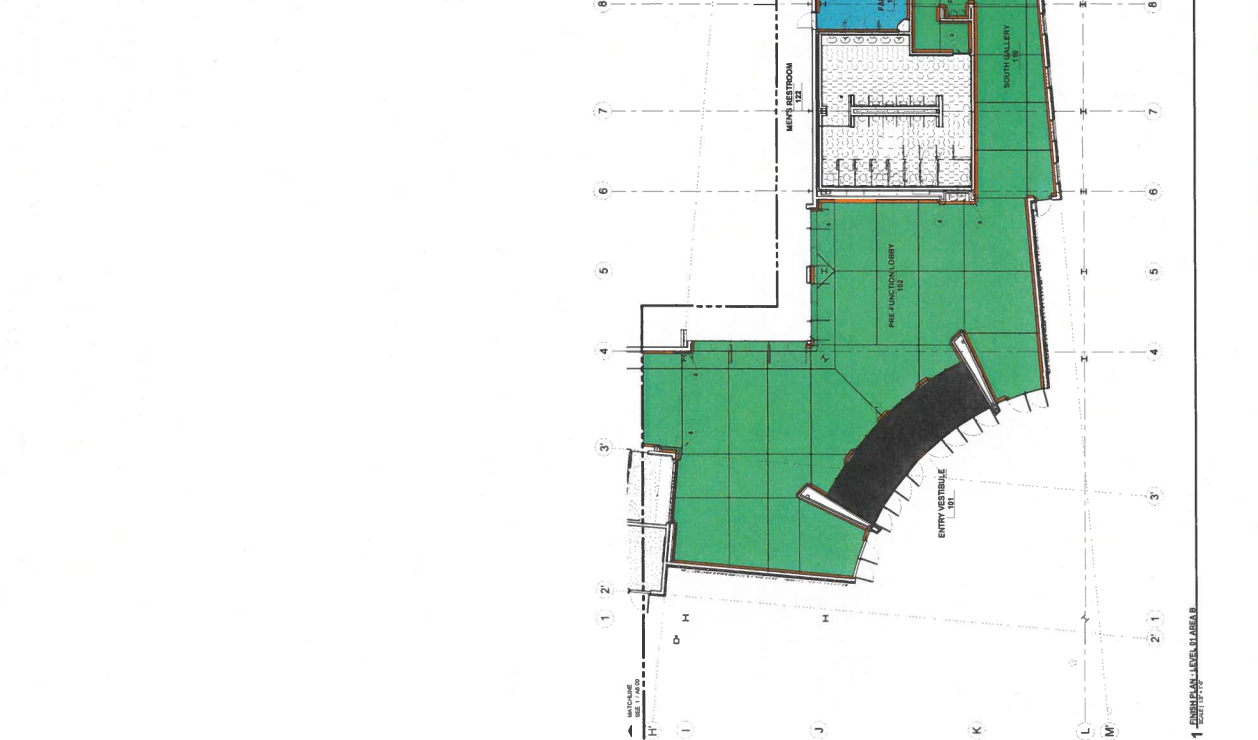
1. METAL TR. AT THE TOP OF ALL TYP. UNLESS NOTED OTHERWISE.
2. METAL TR. AT THE TOP OF ALL EXTERIOR CONCRETE UNLESS OTHERWISE NOTED.
3. METAL TR. AT THE TOP OF ALL EXTERIOR CONCRETE UNLESS OTHERWISE NOTED.
4. METAL TR. AT THE TOP OF ALL EXTERIOR CONCRETE UNLESS OTHERWISE NOTED.
5. METAL TR. AT THE TOP OF ALL EXTERIOR CONCRETE UNLESS OTHERWISE NOTED.
6. METAL TR. AT THE TOP OF ALL EXTERIOR CONCRETE UNLESS OTHERWISE NOTED.
7. METAL TR. AT THE TOP OF ALL EXTERIOR CONCRETE UNLESS OTHERWISE NOTED.
8. METAL TR. AT THE TOP OF ALL EXTERIOR CONCRETE UNLESS OTHERWISE NOTED.
9. METAL TR. AT THE TOP OF ALL EXTERIOR CONCRETE UNLESS OTHERWISE NOTED.
10. METAL TR. AT THE TOP OF ALL EXTERIOR CONCRETE UNLESS OTHERWISE NOTED.
11. METAL TR. AT THE TOP OF ALL EXTERIOR CONCRETE UNLESS OTHERWISE NOTED.
12. METAL TR. AT THE TOP OF ALL EXTERIOR CONCRETE UNLESS OTHERWISE NOTED.
13. METAL TR. AT THE TOP OF ALL EXTERIOR CONCRETE UNLESS OTHERWISE NOTED.
14. METAL TR. AT THE TOP OF ALL EXTERIOR CONCRETE UNLESS OTHERWISE NOTED.
15. METAL TR. AT THE TOP OF ALL EXTERIOR CONCRETE UNLESS OTHERWISE NOTED.
16. METAL TR. AT THE TOP OF ALL EXTERIOR CONCRETE UNLESS OTHERWISE NOTED.
17. METAL TR. AT THE TOP OF ALL EXTERIOR CONCRETE UNLESS OTHERWISE NOTED.
18. METAL TR. AT THE TOP OF ALL EXTERIOR CONCRETE UNLESS OTHERWISE NOTED.
19. METAL TR. AT THE TOP OF ALL EXTERIOR CONCRETE UNLESS OTHERWISE NOTED.
20. METAL TR. AT THE TOP OF ALL EXTERIOR CONCRETE UNLESS OTHERWISE NOTED.

FLOOR TRANSITION

- 1. FLOOR TRANSITION
- 2. FLOOR TRANSITION
- 3. FLOOR TRANSITION
- 4. FLOOR TRANSITION
- 5. FLOOR TRANSITION
- 6. FLOOR TRANSITION
- 7. FLOOR TRANSITION
- 8. FLOOR TRANSITION
- 9. FLOOR TRANSITION
- 10. FLOOR TRANSITION
- 11. FLOOR TRANSITION
- 12. FLOOR TRANSITION
- 13. FLOOR TRANSITION
- 14. FLOOR TRANSITION
- 15. FLOOR TRANSITION
- 16. FLOOR TRANSITION
- 17. FLOOR TRANSITION
- 18. FLOOR TRANSITION
- 19. FLOOR TRANSITION
- 20. FLOOR TRANSITION

KEY NOTES

1. METAL TR. AT THE TOP OF ALL TYP. UNLESS NOTED OTHERWISE.
2. METAL TR. AT THE TOP OF ALL EXTERIOR CONCRETE UNLESS OTHERWISE NOTED.
3. METAL TR. AT THE TOP OF ALL EXTERIOR CONCRETE UNLESS OTHERWISE NOTED.
4. METAL TR. AT THE TOP OF ALL EXTERIOR CONCRETE UNLESS OTHERWISE NOTED.
5. METAL TR. AT THE TOP OF ALL EXTERIOR CONCRETE UNLESS OTHERWISE NOTED.
6. METAL TR. AT THE TOP OF ALL EXTERIOR CONCRETE UNLESS OTHERWISE NOTED.
7. METAL TR. AT THE TOP OF ALL EXTERIOR CONCRETE UNLESS OTHERWISE NOTED.
8. METAL TR. AT THE TOP OF ALL EXTERIOR CONCRETE UNLESS OTHERWISE NOTED.
9. METAL TR. AT THE TOP OF ALL EXTERIOR CONCRETE UNLESS OTHERWISE NOTED.
10. METAL TR. AT THE TOP OF ALL EXTERIOR CONCRETE UNLESS OTHERWISE NOTED.
11. METAL TR. AT THE TOP OF ALL EXTERIOR CONCRETE UNLESS OTHERWISE NOTED.
12. METAL TR. AT THE TOP OF ALL EXTERIOR CONCRETE UNLESS OTHERWISE NOTED.
13. METAL TR. AT THE TOP OF ALL EXTERIOR CONCRETE UNLESS OTHERWISE NOTED.
14. METAL TR. AT THE TOP OF ALL EXTERIOR CONCRETE UNLESS OTHERWISE NOTED.
15. METAL TR. AT THE TOP OF ALL EXTERIOR CONCRETE UNLESS OTHERWISE NOTED.
16. METAL TR. AT THE TOP OF ALL EXTERIOR CONCRETE UNLESS OTHERWISE NOTED.
17. METAL TR. AT THE TOP OF ALL EXTERIOR CONCRETE UNLESS OTHERWISE NOTED.
18. METAL TR. AT THE TOP OF ALL EXTERIOR CONCRETE UNLESS OTHERWISE NOTED.
19. METAL TR. AT THE TOP OF ALL EXTERIOR CONCRETE UNLESS OTHERWISE NOTED.
20. METAL TR. AT THE TOP OF ALL EXTERIOR CONCRETE UNLESS OTHERWISE NOTED.



1 FINISH FLOOR PLAN - LEVEL 01 - AREA B



STAMP

APPROVED FOR CONSTRUCTION
DATE: 11/12/2021
BY: [Signature]

PROJECT INFORMATION

CANYON COUNTY EXPO CENTER
EXPOSITION AND COUNTY FAIR ARE
SCHEDULED TO BE HELD AT THIS LOCATION.



ISSUES

NO.	DATE	DESCRIPTION
1	11/12/2021	ISSUE 001 - CORRECTED

REVISIONS

NO.	DATE	DESCRIPTION
1	11/12/2021	ISSUE 001 - CORRECTED

FINISH FLOOR PLAN - LEVEL 01 - AREA B

NO.	DATE	DESCRIPTION
1	11/12/2021	ISSUE 001 - CORRECTED

SHEET NUMBER

A6.01

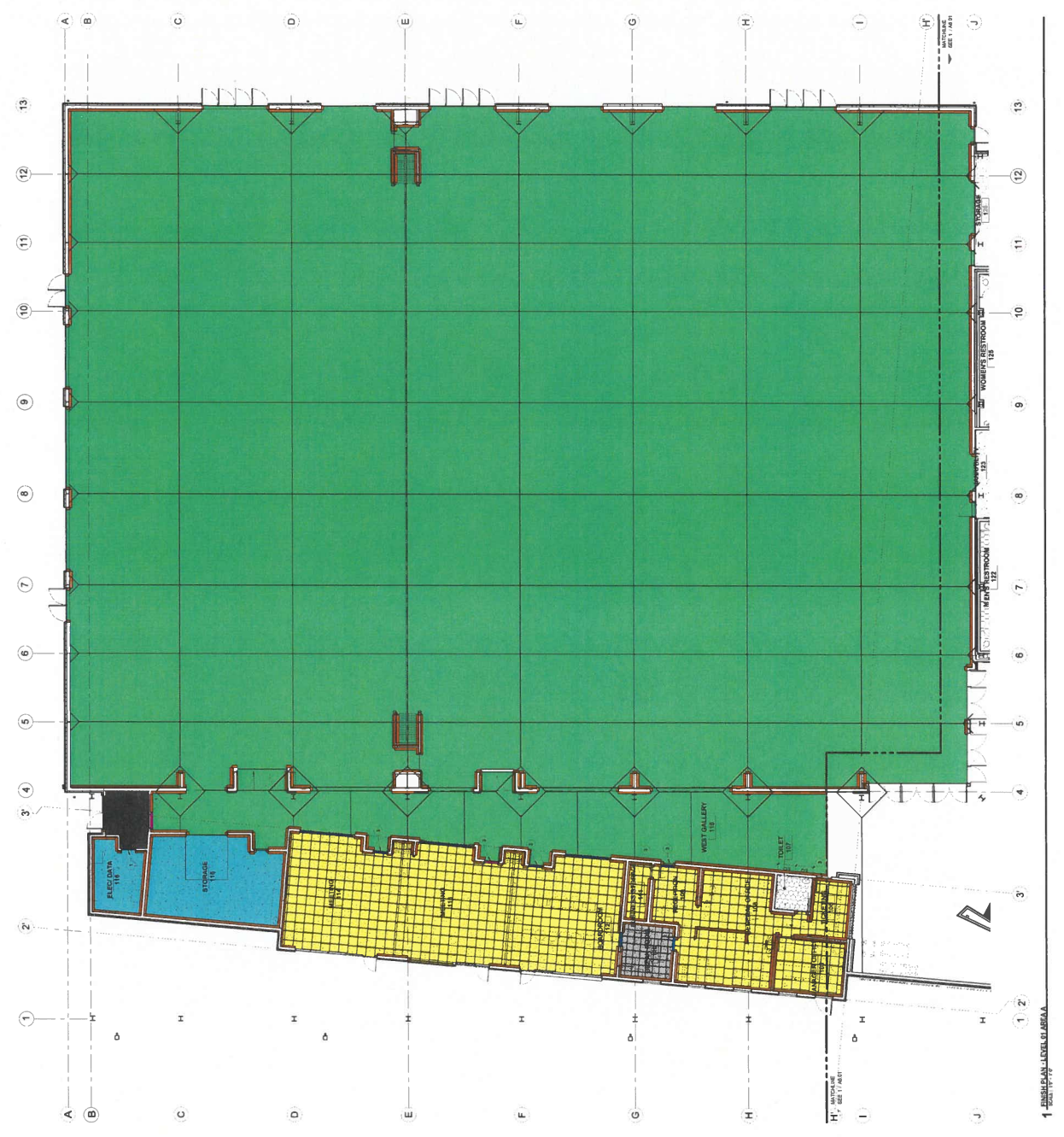
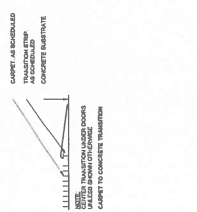
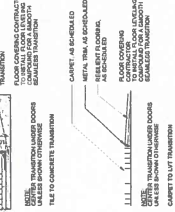


Table with project information including: PROJECT INFORMATION, SHEET NUMBER (A6.00), FINISH FLOOR PLAN - LEVEL 01 - AREA A, and SHEET NUMBER.

GENERAL NOTES
A. REFER TO ARCHITECTURAL FLOOR AND FIRST FLOOR PLANS FOR FINISH SCHEDULE AND MATERIALS.

KEY NOTES
1. CONCRETE CONTROL JOINTS TO BE LOCATED AS SHOWN ON ALL WALLS.

FLOORING MATERIALS
REFER TO EXTERIOR FINISH SCHEDULE
GPH 1)
GPH 2)
GPH 3)
GPH 4)



PROJECT: canyon co expo

DATE: 3/18/2021

TOTALS

BLDG/RM	MATERIALS	TOTALS - FT / YDS	MANUFACTURER / STYLE / COLOR
cpt 1	shaw diffuse tile color annual 75150 2 x 2	346.45 sq yds	
woc	j&j runway ii color fresh 7267 face 14211/4 turn	75 sq yds	not adj to ctns
rb1	roppe 4 i9n pinnacle color tbd	2040 lf	
con 1	polished concrete	35460 sq ft	
con 2	sealed concrete	1682 sq ft	
lvt	shannon tuf stuf chateau 18 x 18 not on specs	180 sq ft	
	cpt to vinyl reducer schluter	7 lf	
	walk off cpt to concrete schluter reno u tr1	44 lf	
	cpt to concrete schluter scheine tr2	46 lf	

BID DATE & TIME: asap

BID TO: Canyon Co