



CANYON COUNTY SOLID WASTE

15500 MISSOURI AVENUE
NAMPA, IDAHO 83686

Minutes

Canyon County Solid Waste Advisory Committee

First Meeting

Wednesday, June 28, 2023

10:00 am –2:00 pm

Rollcall for Committee Members – Fred Butler, District 1 (unable to attend), Russ Shroll, District 2, Hubert Osborne, District 3, Tom Points, City of Nampa, Brent Orton, City of Caldwell (unable to attend), David Murray, City of Middleton, (unable to attend), Doug Amick, City of Greenleaf.

Ex-Officio Members in attendance were: Travis Williams, Hardin Sanitation, Bob Bennett, Republic Services, Mike Murgoitio, Timber Creek Recycling and Chad Gordon, J&M Sanitation (unable to attend)

Action Items: Agenda approval for the current meeting was motioned for approval by Doug Amick and 2nd by Tom Points. The committee approved the current agenda. There was no approval of minutes from prior since this was the first committee meeting.

New Business: David Loper, Direct of Canyon County Solid Waste, led the meeting by giving an overview of the operations of the Landfill. He highlighted the Landfill is not a dump but a Sanitary Landfill. The average tons of waste Pickles Butte Sanitary Landfill receives daily is 1,200 which brings between 600-1,000 vehicles through the gate daily. David discussed the current design of the Landfill. Currently the landfill is 116 acres which contains no liner, leachate collection system and currently installing an LFG System. He also discussed the current ground water monitoring program. David discussed the Landfill is currently working on the expansion plans, site certification and the arid design. Once complete this will give Pickles Butte Sanitary Landfill 75 to 100+ more years of air space. The Landfill is also currently working on Gas Collection and Flare System, Dust Control and Hardscaping projects. The Household Hazardous Waste (HHW) program that Pickles Butte hosts four times a year is a huge draw. It has been very successful County wide.

PICKLES BUTTE SANITARY LANDFILL

Tele 208-614-5005

Fax 208-466-7296

email David.Loper@canyoncounty.id.gov

David took the Committee members and the Ex-Officio members on a tour of the facility. After the tour, David gave the Ex-Officio the floor to give any updates and input. Bob Bennett, Travis Williams, and Mike Murgotio are very excited to be part of this new group and they are looking forward in bringing their experiences to the Committee.

In closing the Canyon County Solid Waste Advisory Committee (SWAC) voted on a Chair and Vice Chair. Russ Shroll made a motion to have Tom Points be Chair and Doug Amick 2nd the motion. The motion passed unanimously. Russ Shroll made a motion to have Doug Amick be the Vice Chair and Tom Points 2nd the motion. The motion passed unanimously.

David Loper, Director of Canyon County Solid Waste asked to have the following put on the next meeting's agenda; Transfer Stations, 2023/2024 Budget and New Rate Increases. David asked if the committee had other agenda items to add. None were added.

Next meeting will be July 26th at 10:am at Pickles Butte Sanitary Landfill Conference Room. Doug moved to have the next meeting date approved and Tom 2nd the motion. The motion passed unanimously. Doug Amick moved to adjourn the meeting with Russ Shroll 2nd, the meeting was adjourned.



CANYON COUNTY SOLID WASTE

AGENDA

Canyon County Solid Waste Advisory Committee

Regular Meeting

Wednesday, June 28, 2023

10:00 a.m. – 2:00 p.m.

Pickles Butte Sanitary Landfill

15500 Missouri Ave.

Nampa, ID 83686

I. Call to Order

II. Rollcall

- a. Fred Butler, District 1
- b. Russ Shroll, District 2
- c. Hubert Osborne, District 3
- d. Tom Points, City of Nampa
- e. Brent Orton, City of Caldwell
- f. David Murray, City of Middleton
- g. Doug Amick, City of Parma/Greenleaf/Wilder

Ex-Officio Members

- a. Bob Bennett, Republic Services
- b. Travis Williams, Hardin Sanitation
- c. Mike Murgotio, Timber Creek Recycling
- d. Chad Gordon, J&M Sanitation

III. Action Items

- a. Agenda Approval
- b. Approval of Minutes: N/A

IV. New Business

- a. Landfill Overview and Tour
- b. Lunch
- c. Ex-Officio Updates/Input
- d. Vote Chair and Vice Chair Positions

V. Old Business

- a. N/A

VI. Other Business

- a. Additional Topics

VII. Next Meeting Date:

VIII. Adjournment:

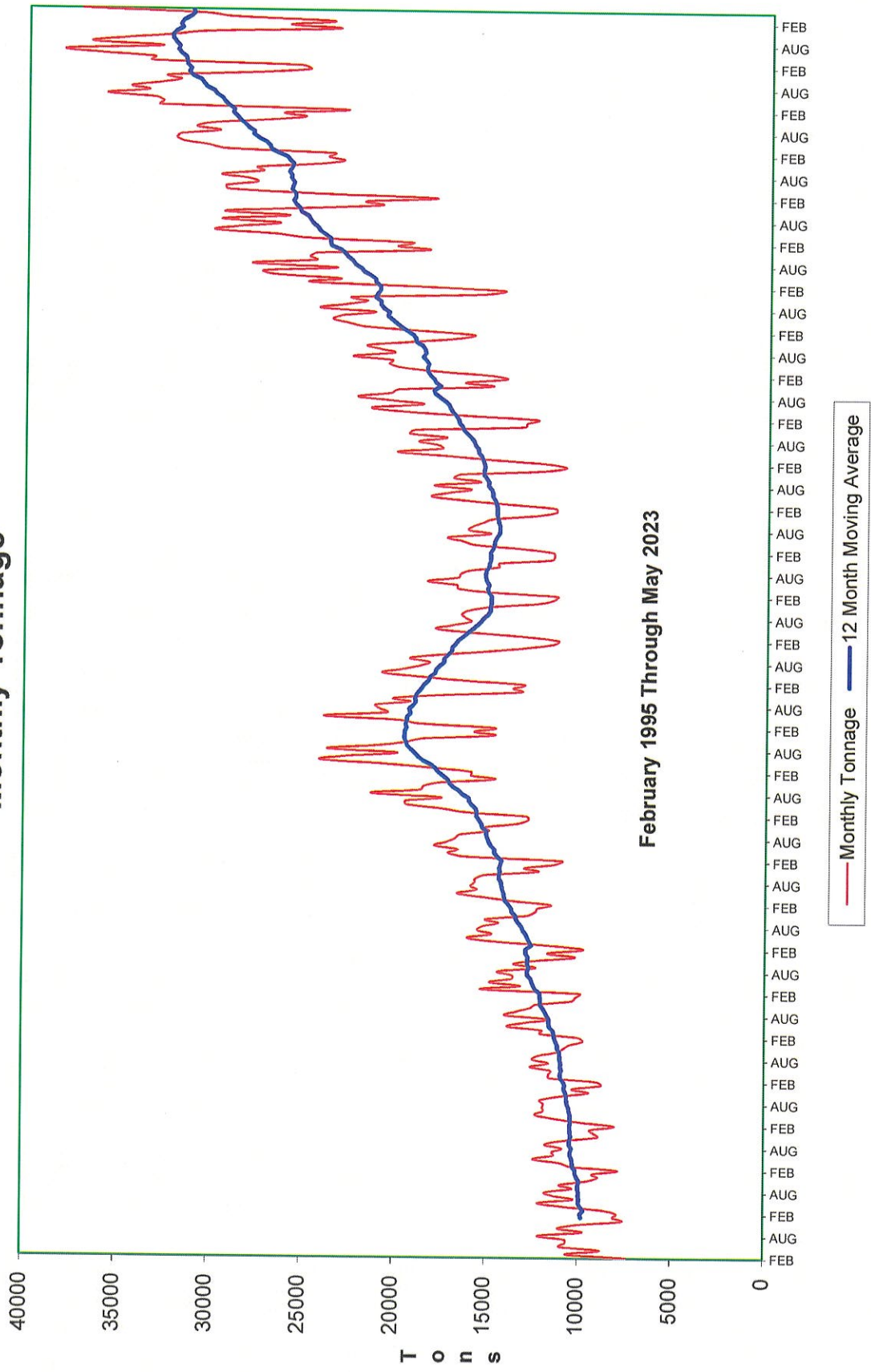
PICKLES BUTTE SANITARY LANDFILL

Tele 208-614-5005

Fax 208-466-7296

email David.Loper@canyoncounty.id.gov

Monthly Tonnage





Canyon County Solid Waste Fee Schedule

Hours of Operation

Monday – Saturday8:00am to 5:30pm

(Gates close at 5:30pm)

Closed Sundays and some Holidays

(New Year's Day, Memorial Day, Independence Day, Labor Day, Thanksgiving Day & Christmas Day)

ALL FEES ARE BASED PER TON UNLESS OTHERWISE SPECIFIED

Canyon County Waste Fees

Minimum Fee	\$5.00
Municipal Solid Waste	\$14.50
Construction/Demolition Waste	\$34.00
Tires (per tire)	\$2.00
Refrigeration Units (per unit)	\$15.00
Asbestos	\$50.00

Owyhee County Waste Fees

Minimum Fee	\$5.00
Municipal Solid Waste	\$16.00
Construction/Demolition Waste	\$34.00
Tires (per tire)	\$2.25
Refrigeration Units (per unit)	\$15.00
Asbestos	\$57.50

Hard to Handle Waste

Large Stumps	\$21.75
Bio Solids	\$21.75
Concrete	\$21.75
Mobile Homes	\$21.75
Dead Animals (plus burial fee)	\$21.75
Mattresses	\$21.75
Drip Line	\$21.75

*Out-of-County Waste Fees

Municipal Solid Waste	\$29.00
Construction/Demolition Waste	\$34.00
Tires (per tire)	\$4.00
Refrigeration Units (per unit)	\$30.00
Clean Wood	\$24.00

Special Handling Fees

Uncovered/Unsecured Loads	\$50.00
Equipment Fee	\$25.00
Anchoring (per anchor)	\$15.00
Vehicle/trailer battery jumping	\$10.00
Gate Closure late fee	\$20.00
Clean Wood Penalty	\$15.00
(Disposing of trash in clean wood pile)	
Administrative Charges (per hour)	\$25.00
(Extra tickets/reports, research)	

Miscellaneous Fees

Agriculture Waste	\$14.50
Contaminated Dirt	\$14.50
Credit Card Convenience Fee	\$1.50
Clean Wood	\$12.00
Fuel (gallon)	\$5.00
Burial Fee	\$10.00
NSF Bank Fees (per check)	\$30.00
Late charge	1.50%
(On Charge Accounts past 30+ days)	

We accept the following per load:

Tires (passenger)	10
Paint	5 gallons
Oil/Gas	3 gallons

For more information, visit us at: www.canyoncounty.id.gov

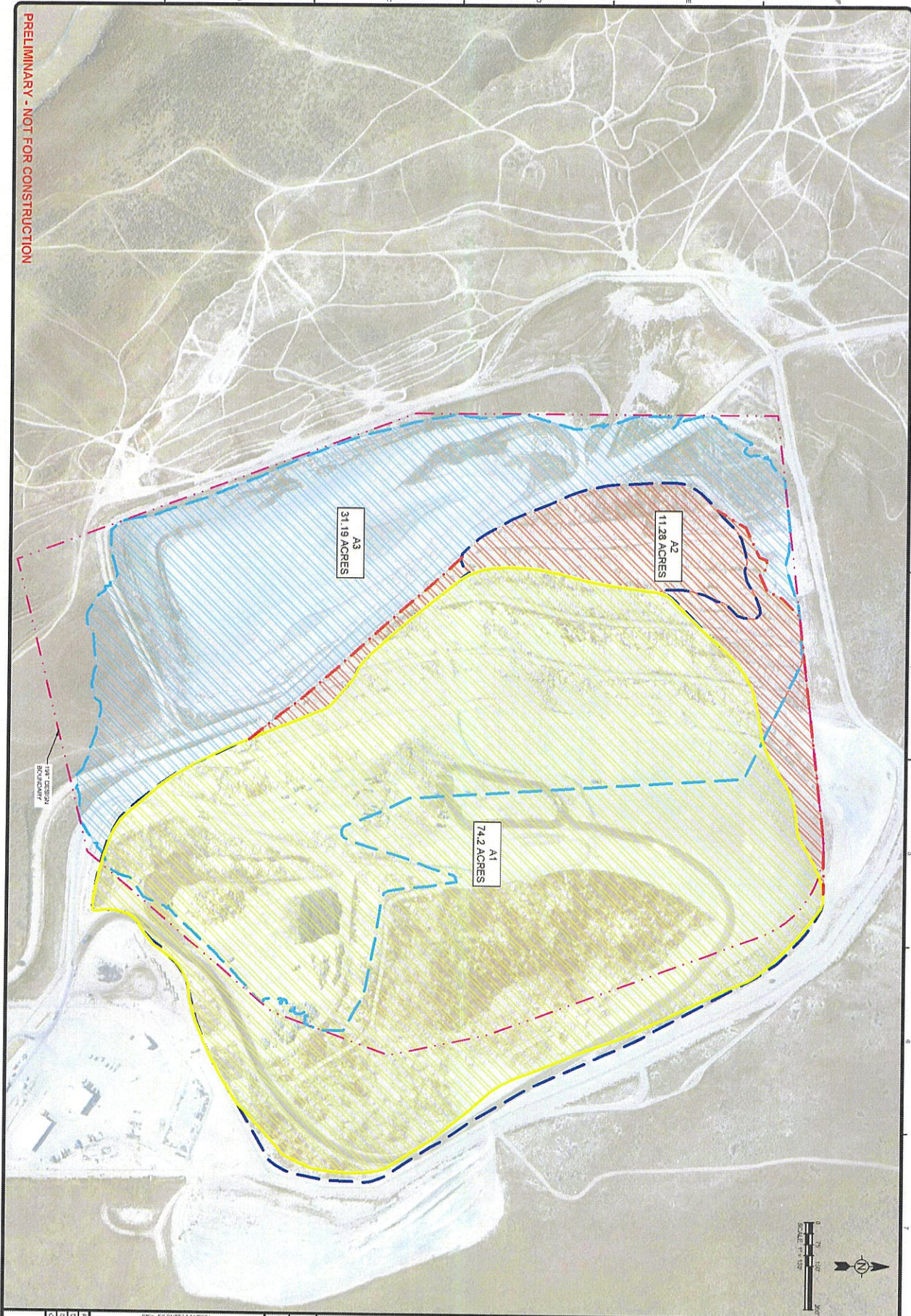
***OUT-OF-COUNTY WASTE WILL NOT BE ACCEPTED WITHOUT PRIOR APPROVAL**


PICKLES BUTTE SANITARY LANDFILL

Tele 208-466-7288

Fax 208-466-7296

PRELIMINARY - NOT FOR CONSTRUCTION



<div>X</div>	PICKLES BUTTE LANDFILL CANYON COUNTY, IDAHO		MARK	DATE	DESCRIPTION	BY		<div>DRAFT</div> <div>NOT FOR CONSTRUCTION</div>	<div> TETRA TECH</div> <div>www.tetratech.com</div> <div>3082 Americana Terrace, Suite 201 Boise, ID 83754 Phone: 208-389-1010</div>
	UPDATED PHASE 3 DESIGN		A	10/30/20	ISSUED FOR INTERNAL REVIEW	MM			
	BOND AREAS								
Project No. T-47476-0002									
Discipline: T-47476-0002									
Created By: MM	MM								
MM									

Copyright Tetra Tech

Tonnage and MegaGram Records since Landfill Opened
Annual Tonnage for Greenhouse Gas Calculations
Year is defined by Oct 1 through Sept 30.
* 1983 April 1 through Sept 30.

	Tons	Megagrams
1983*	18478	16768
1984	39503	35847
1985	42206	38299
1986	45074	40902
1987	48117	43663
1988	51345	46593
1989	54770	49701
1990	68472	62134
1991	72649	65925
1992	77081	69946
1993	81980	74392
1994	108065	98063
1995	113424	102926
1996	119,707	108627
1997	125,389	113783
1998	127,329	115543
1999	131,723	119531
2000	140,418	127421
2001	149,789	135924
2002	155,874	141446
2003	170,110	154365
2004	178,582	162052
2005	195,572	177470
2006	228,320	207187
2007	222,475	201883
2008	204,433	185511
2009	176,284	159968
2010	179,175	162591
2011	169,137	153482
2012	178,124	161637
2013	188,611	171153
2014	211,955	192337
2015	218,230	198031
2016	247,213	224331
2017	265,018	240488
2018	293,553	266382
2019	302,376	274388
2020	324,488	294454
2021	347,228	315089
2022	368,999	334845
Totals	6,441,275	5,845,077

Phase 1 Acres 74.2

Estimated Total Capacity/Tons = 4,652,652

1983 to 2015 = 4,292,400

2016 (October 1, 2015 to May 30, 2016) = 157,252

2017 (November 1, 2016 to April 30, 2017) = 116,511

2017 (May 1, 2017 to September 30, 2017, 20%) = 25,483

2018 (October 1, 2017 to October 31, 2017, 20%) = 4,925

2018 (November 21, 2017 to December 12, 2017, 20%) = 3,133

2018 (April 30, 2018 to June 20, 2018) = 49,853

Total Waste in Place as of end FY2018 = 4,649,557

Phase 2 Acres 11.28

Estimated Total Capacity/ Tons = 1,156,961

2016 (June 1, 2016 to September 30, 2016) = 89,961

2017 (October 1, 2016 to October 31, 2016) = 21,089

2017 (May 1, 2017 to September 30, 2017, 80%) = 101,934

2018 (October 1, 2017 to October 31, 2017, 80%) = 19,442

2018 (November 1, 2017 to September 30, 2018) = 216,200

2019 (October 1, 2018 to September 30, 2019) = 302,376

2020 (October 1, 2019 to September 30, 2020) = 324,488

2021 (October 1, 2020 to February 8, 2021) = 107,801

2021 (February 9, 2021 to May 23, 2021) = 33,930

2022 (December 29, 30, 2021) = 1,326 Snow Days

2023 (January 19, 2023) = 500 Snow Day

Total Waste in Place as of end FY2023 = 1,219,047

Phase 3 Acres 31.19

Estimated Total Capacity/ Tons = 3,445,764

2021 (February 9, 2021 to May 23, 2021) = 67,854

2021 (May 24, 2021 to September 30, 2021) = 137,643

2022 (October 1, 2021 to September 30, 2022) = 367,673

Total Waste in Place as of end FY2021 = 573,170

Phase 4 Acres 0

Estimated Total Capacity/ Tons = 1,356,000

Estimated Total Capacity in Tons = 10,611,377

Total Acres 116.67